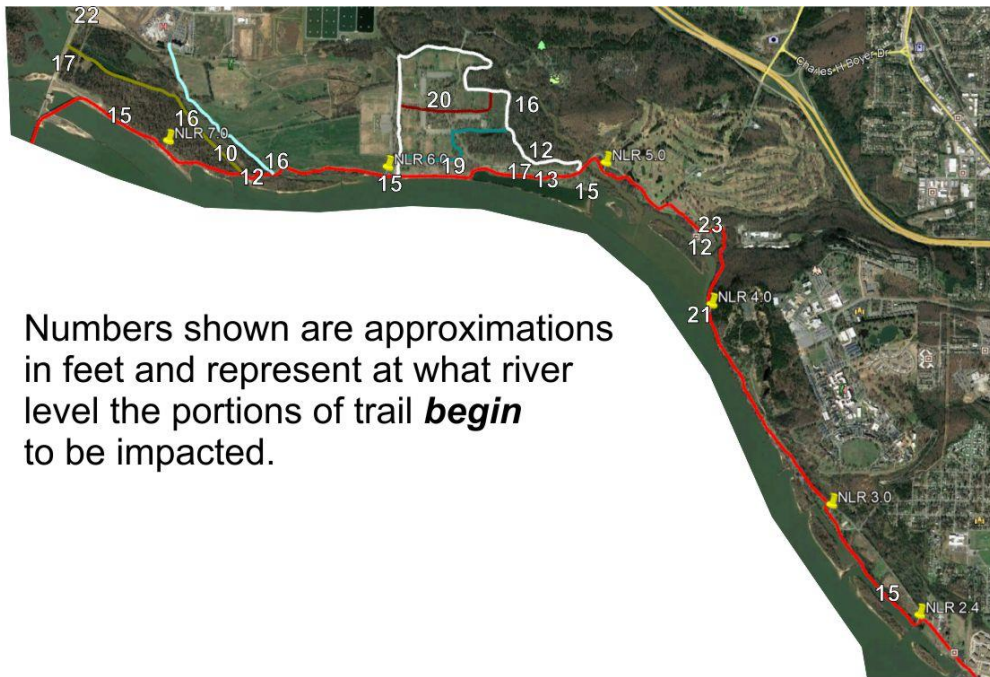


Impact of River Level on Arkansas River Trail and nearby trails

Updated January 4, 2019



Numbers shown are approximations in feet and represent at what river level the portions of trail **begin** to be impacted.

River Level* (feet)	Elevation (feet)	
8.0	236.0	- Impacted Area (Impact)
		(Normal Level)
10.0	238.0	- Isabella Jo Trail - southern end (underwater - not passable)
		- Pfeiffer Loop Trail - underwater on east sections
12.0	240.0	- Arkansas River Trail "ART" - Hatfield/McCoy Bridge (going underwater - crossing is possible but not recommended)
		- White Oak Trail - various locations from Field 7 to Tournament Drive (underwater)
		- Shilcott's Bayou Boat Ramp and Main Dock (underwater - no access to dock)
13.0	241.0	- Arkansas River Trail "ART" - Hatfield/McCoy Bridge (underwater - not passable)
		- Arkansas River Trail "ART" - closed between BDB and North Shore Trail
13.5	241.5	- ART - at Victory Lake - low area (underwater)
15.0	243.0	- Victory Lake Boat Ramp (underwater and not usable)
		- ART - east of Riverview Park - Full Counsel section (portions underwater)
15.5	243.5	- ART - Mayor's Gate (underwater 4"+)
		- Cooks Landing - ART turnaround - paved portion (partially underwater)
16.0	244.0	- White Oak Bayou Trail - various locations from Rugby/Field 5 to Tournament Drive (underwater)
		- Isabella Jo Trail - portions west of Hooper's Crossing (underwater 3"+ - not passable)
		- North Shore Trail - southern section (underwater 1"+)
		- ART - Mayor's Gate (underwater - not passable)
		- ART - first turn east of Hatfield/McCoy Bridge (underwater 4"+)
		- Cooks Landing - BDB Pavilion (floor is underwater)
		- <i>If rising - soccer complex will be closed</i>

- 17.0 ----- 245.0 -----
 - Soccer Fields 5, 6 (moats beginning)
 - Soccer Fields 9, 10 (partially underwater)
 - Soccer Fields 7, 8, 9, 10, 11 (moats around fields)
 - Cooks Landing Road by Isabella Jo Trail (partially underwater)
 - ART - from Victory Lake to Mayor's Gate (mostly underwater)
- 17.5 ----- 245.5 -----
 - Tournament Drive - east bridge to Dog Park (underwater)
 - Cooks Landing Road by Isabella Jo Trail (underwater 8"+ - not passable - road closed)
 - Cooks Landing Road - cul-de-sac (partially underwater)
 - Hooper's Crossing (connects Isabella Jo and North Shore trails) (underwater)
- 18.0 ----- 246.0 -----
 - Soccer Quad 2, 3 (moat around quads)
 - Soccer Quad 3 Parking Lot (water flowing over south/east entrance of parking lot)
 - Soccer Fields 13, 14 - south ends (underwater)
 - Soccer Fields 9, 10 (underwater)
 - Soccer Quad 3 Maintenance (water over floor)
- 19.0 ----- 247.0 -----
 - Soccer Fields 5, 6 (water on edges)
 - Soccer Quad 3 Parking Lot - south end for Fields 9, 10 (underwater)
 - Soccer Fields 13, 14, 15 (underwater)
 - Soccer Quad 3 Maintenance (underwater 8"+)
 - Catfish Road (underwater)
 - ART - Mile 4 bench - between Big Rock Quarry and Burns Park (water on trail 1"+)
- 20.0 ----- 248.0 -----
 - Soccer Quad 4 - access to parking lot (underwater)
 - Soccer Avenue - each end (underwater)
- 21.5 ----- 248.5 -----
 - Soccer Field 1 (moat around field)
 - Soccer Quads 2, 3, 4 - all Fields (underwater)
 - Soccer Quad 1 Parking Lot south end (underwater)
 - Soccer Avenue (underwater)
 - ART - Mile 4.1 (underwater 2"+)
 - ART - if rising, close trail between Shilcott's Bayou and Big Rock Quarry
- 22.0 ----- 250.0 -----
 - Victory Lake Restroom (underwater 2"+)
 - Soccer Quad 2, 3 Restroom/Concession (underwater 2"+)
 - Soccer Quad 4 Restroom/Concession (inches from being underwater)
 - Soccer Quad 1 - south Parking Lot (underwater)
 - Soccer Field 1 (mostly underwater)
 - White Oak Bayou Trail - behind Field 3 (going underwater)
 - Shilcott's Bayou Boat Ramp - back parking lot and ART (underwater)
 - Cooks Landing Road - by fishing lake (underwater)
 - Cooks Landing Levy (overflowing)
- 22.5 ----- 250.5 -----
 - Tournament Drive - west bridge (underwater)
- 23.0 ----- 251.0 -----
 - Shilcotts Bayou Bridge (water at walkway ends)
- 24.0 ----- 252.0 -----
 - Shilcotts Bayou Bridge (water on bridge - not passable)

**River Level is based on hydrograph from weather.gov*

